

Antenna Authority, Inc.

DF Antennas Our Specialty!

www.AntennaAuthorityinc.com

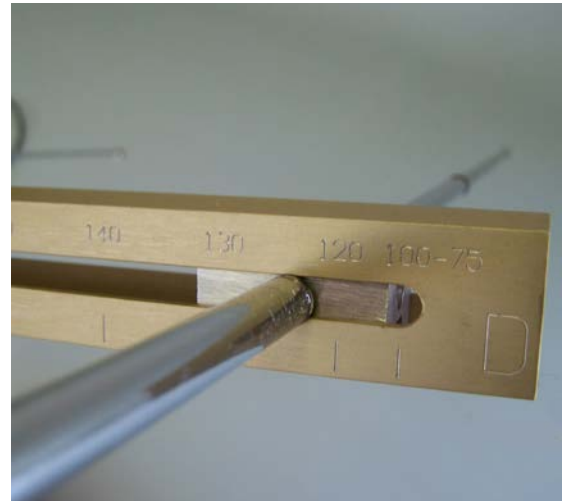
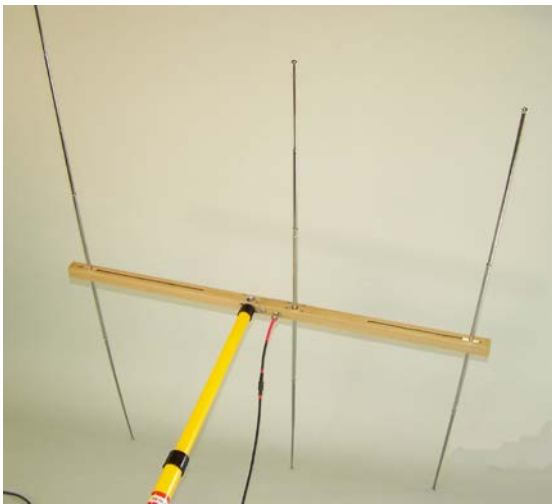
3381 West County Line Rd. Douglasville, GA 30135-1145

P: 770-577-7969 F: 770-577-7180 C: 770-331-0436

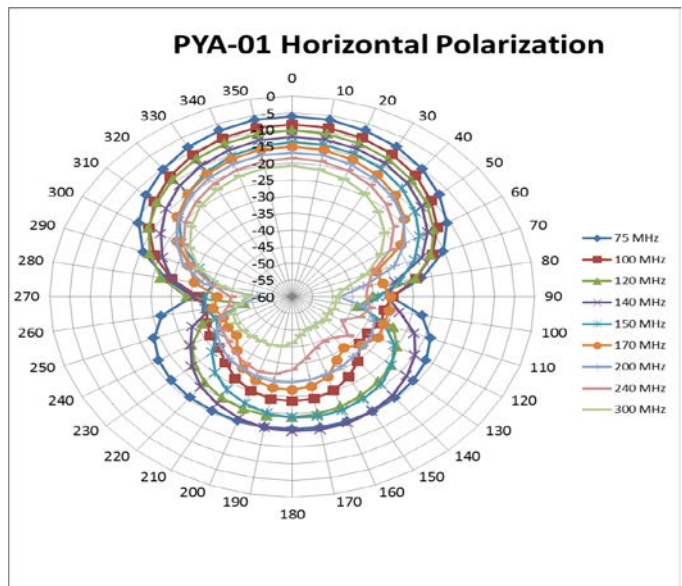
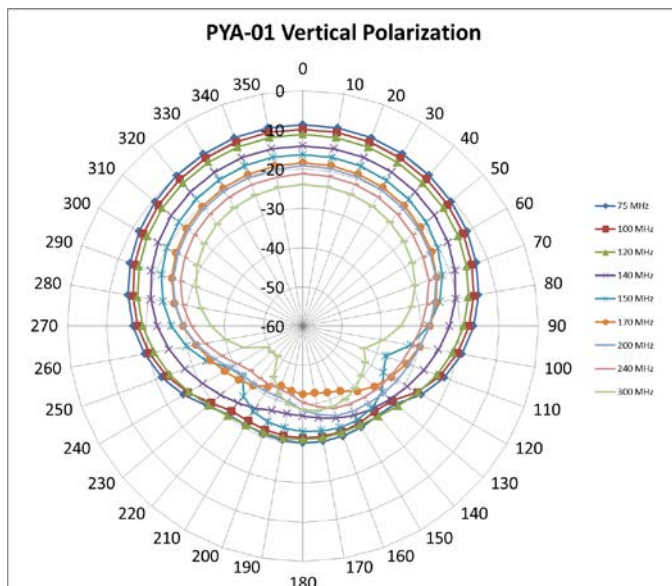


Portable Yagi Antenna Model # PYA-01

The PYA-01 Yagi Antenna is reliable and directional. It is simple to adjust to a specific frequency. The Yagi is tolerant to variations in settings and can be used in vertical or horizontal polarized positions.



The PYA-01 Yagi Antenna is reliable and directional. It is simple to adjust to a specific frequency. The Yagi is tolerant to variations in settings and can be used in vertical or horizontal polarized positions.



ADJUSTMENT OF THE YAGI ANTENNA

The PYA-01 antenna utilizes a single director and single reflector. The spacing is marked on the shaft and is slightly less than $\frac{1}{4}$ wave length. The active element is set by inserting the $\frac{1}{4}$ wave frequency ruler in the slot and extending the length of the element to the desired frequency. Do the same for the director except set to 10% greater in frequency and likewise for the reflector set to 10% less in frequency. This will make the director slightly shorter and the reflector slightly longer than the center active element.

It is delivered with a fiber glass mounting pole, 6' coax BNC to BNC with ferrites, frequency ruler and telescoping antenna elements which are threaded for 10-32 threads to be screwed on to the antenna mast at the frequency marked distance.

The telescoping antenna elements are set with the use of $\frac{1}{4}$ lambda frequency ruler.



Reflector set to 270 MHz



Driven Element set to 300 MHz



Director set to 330 MHz

Frequency:	75 to 300 MHz
Gain:	+3 dBi to +6 dBi
Impedance:	50 Ohm
VSWR:	2.0:1 maximum
Polarization:	Vertical / Horizontal
Beam width (3 dB)	Horizontal 60 degrees
	Vertical 120 degrees
Front to back ratio	15 dB to 25 dB
Weight:	16 Lbs.
Size:	21" X 17" X 9"
Date	January 2014

